

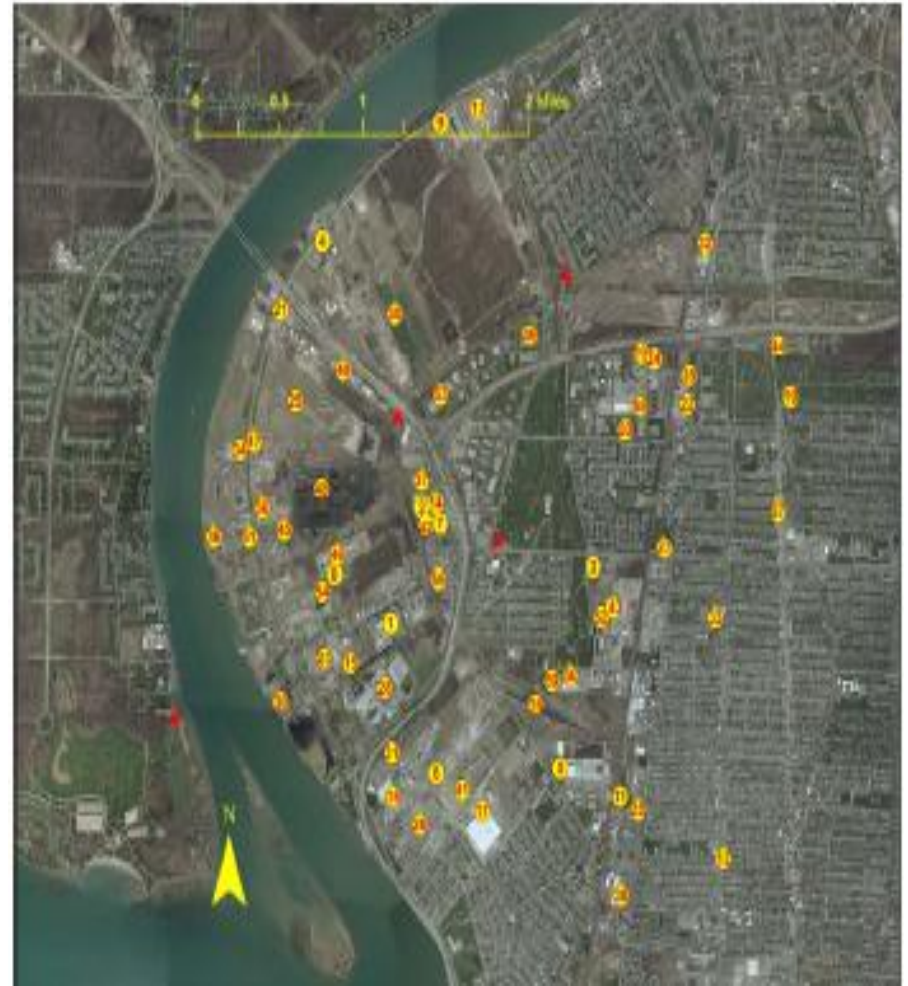
# Town of Tonawanda Sustainability Initiative

**Purpose:** Substantially reduce air toxics (other media concerns) in the Town of Tonawanda through a community-based sustainable approach.



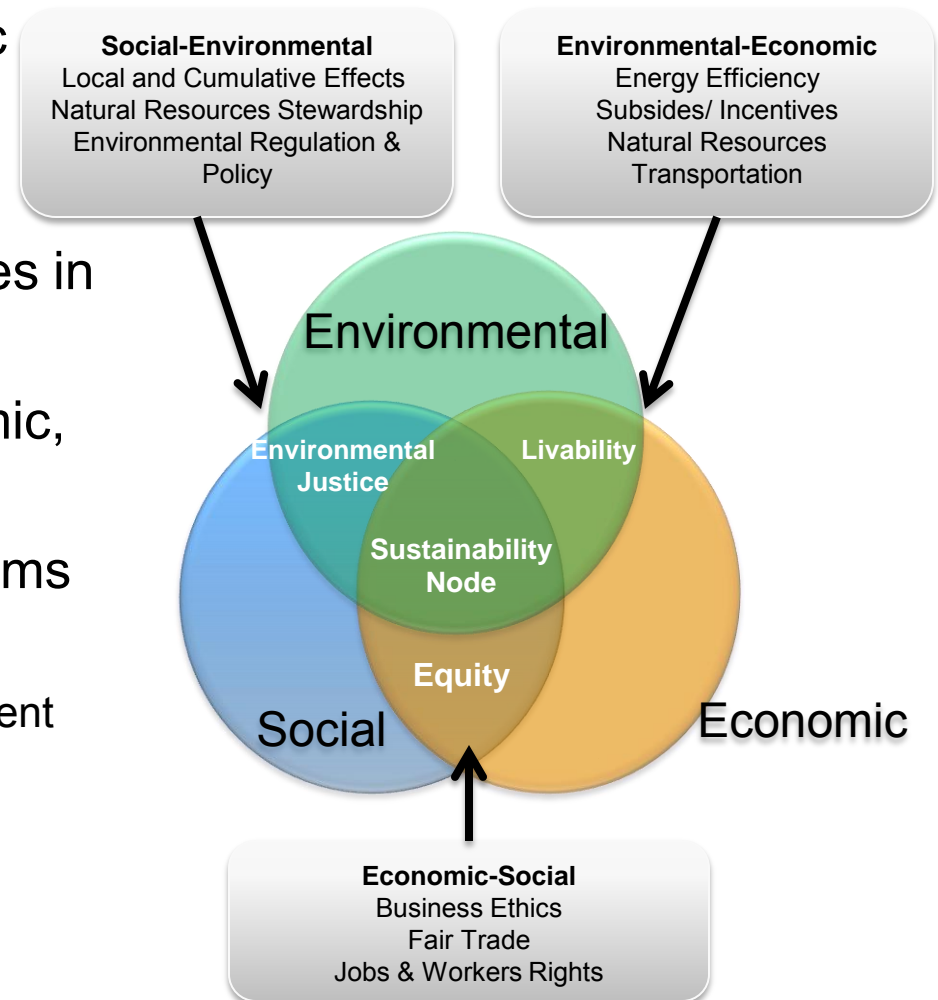
# Potential Environmental Challenges

- One of the highest densities of air pollution in New York State (59 regulated facilities).
- The area household income is \$18,000 and nearly 40% of the community lives below the federal poverty line.



# Tonawanda Community-Based Approach

- ✓ Focus on a definable geographic
- ✓ Work collaboratively with stakeholders.
- ✓ Assess the quality of all resources in place.
- ✓ Integrate environmental, economic, and social objectives.
- Use the most appropriate programs and tools.
  - TRI Program/ Community Engagement
  - E3: Economy, Energy, Environment
  - CARE Program
  - Other programs



Adopted from the 2002 University of Michigan Sustainability Assessment

# Benefits of the Community-Based Approach



## Economic-Environmental Goals

- Improved competitiveness of existing businesses
- Enhanced ability to attract new business and talented works
- Increased manufacturing jobs and/or job retention
- Trained workforce with skills for a sustainable economy



## Social-Environmental Goals

- Significantly reduce toxics in community
- Encourage the development of an environmental coalition



## Social-Economic Goals

- Enhanced work environments and more productive workers
- Improve sustainable business practices
- Technical support to retool for emerging manufacturing markets
- Job creation and retention