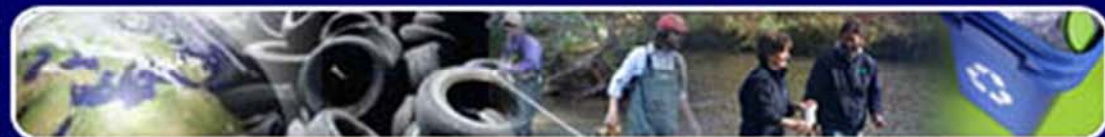




Environmental Protection Agency

Office of Solid Waste and Emergency Response (OSWER)



Finding Information about Cleanups in Your Community

Lisa Tracy Jenkins, OSWER/OPM/IMDQS
November 2010

OSWER 

Overview

- Why Cleanups in My Community (CIMC)?
- Current Scope of CIMC
- How can I use CIMC for my community?
- Quick tour of the new CIMC
- Planned improvements
- Your ideas/questions?



OSWER

Why Cleanups in My Community (CIMC)?

- It is hard to find out about cleanups going on in a community
 - ❑ Information is dispersed across 5+ EPA cleanup programs plus state programs
 - ❑ Interfaces and information are not consistent across programs
- Cleanup information is sometimes hard to understand
 - ❑ Terms or acronyms; Information is easy to misinterpret
 - ❑ Sometimes hard to find the “status” of cleanups
 - ❑ Cleanups switch programs and the trail is lost between them
- EPA has other cross-program tools, but they don't really fit the bill
 - ❑ My Environment (MyE) has a very small map view and doesn't allow all cleanups to display together on the map.
 - ❑ But CIMC links closely with it to connect to related data
 - ❑ Enviromapper was undergoing a complete revision prior to our latest redevelopment effort
 - ❑ A programmatic focus can be helpful in reaching certain audiences



OSWER

Current Scope of CIMC (in transition)

Types of Cleanups:

- Superfund NPL (including Federal Facilities, BRAC)
- Brownfields properties and grants
- RCRA Corrective Action

Geographic Choices:

- Nation, state, group of states, region, county, ZIP Code
- Watersheds and Tribal Areas
- Area around an address, a lat/long or a cleanup site

Related Data to Display on Maps:

- Water monitoring stations (with links to the monitoring data)
- RCRA Hazardous Waste Facilities



Current Scope of CIMC (in transition)

Functionality:

- Map cleanups, Brownfield Grants and Tribal Areas
- Filter on engineering and institutional controls, environmental indicators (risk of human exposure, risk of groundwater migration)
- List cleanups in tabular format
 - Download your lists
- Link to profiles for each cleanup
 - RCRA (Corrective Action profiles)
 - Superfund
 - RODs, 5-year reviews, Institutional Controls, Regional updates...
 - Brownfields (properties and grant profiles)
 - Enforcement (via EPA's ECHO)



OSWER

How can I use CIMC for my community?

- Enter the address for a property and see what is around it
 - Useful to real estate buyers, bankers, insurers, redevelopers
 - See what chemicals have been found and about the cleanup effort
 - Look for land restrictions (institutional controls)
- Check out the quality of water near a cleanup and compare to substances found at the cleanup site to see if there might be concerns about groundwater
 - Useful to homeowners, concerned citizens, relatives and friends
- Find out more about a nearby cleanup
 - When will cleanup be over (and the trucks stop carting dirt)
 - How is the site rated on key environmental indicators



And now, for a Lightning Fast Tour of the new CIMC...



OSWER



LEARN THE ISSUES | SCIENCE & TECHNOLOGY | LAWS & REGULATIONS | ABOUT EPA

ALL EPA THIS AREA Advanced Search SEARCH

Cleanups In My Community

You are here: EPA Home » Cleanups » Cleanups In My Community

Cleanups In My Community Map

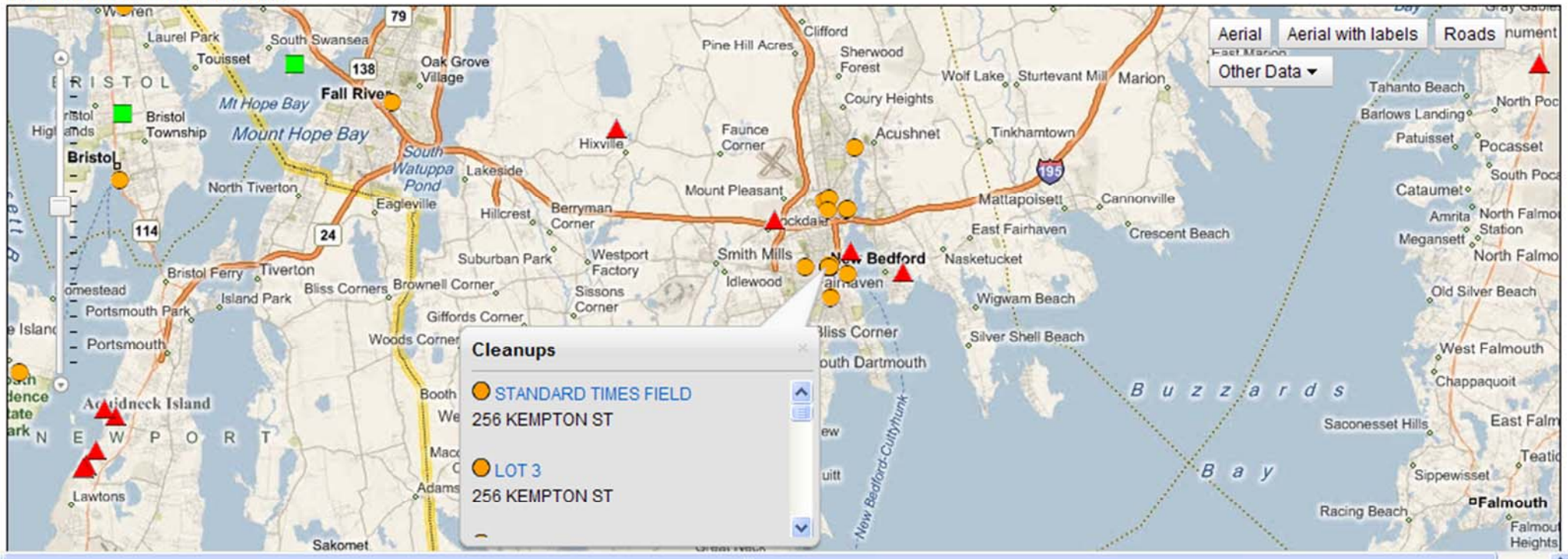
Map Help About this Site Contact Us

EPA Response to BP Spill in the Gulf of Mexico: Click here for BP Deep Horizons Oil Spill Data

Define Your Community: Address Radius (mi): 1 List It or Map It Filter Cleanup Type

- CIMC Sites: ● Brownfields ■ Hazardous Waste ▲ Superfund ◆ Multiple Listings
- Brownfield Grants: ■ Job Training Grants ■ Job Training Pilot ■ Assessment Grants ■ Assessment Pilots ■ Cleanup Grants ■ RLF Grants ■ RLF Pilots ■ State and Tribal 128(a) Grants ■ Multiple Grant Types

Click on a site for more information





LEARN THE ISSUES | SCIENCE & TECHNOLOGY | LAWS & REGULATIONS | ABOUT EPA

ALL EPA THIS AREA Advanced Search SEARCH

Cleanups In My Community

You are here: EPA Home » Cleanups » Cleanups In My Community

Map Help About this Site Contact Us Share

EPA Response to BP Spill in the Gulf of Mexico: Click here for BP Deep Horizons Oil Spill Data

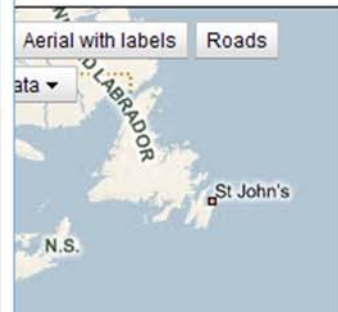
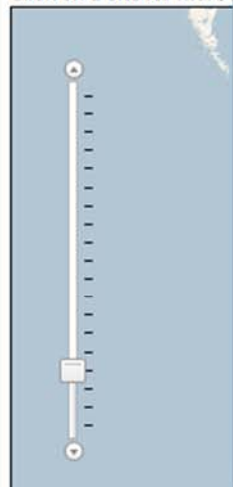
Cleanups In My Community Map

Define Your Community: City philadelphia Pennsylvania List It or Map It Filter Cleanup Type

CIMC Sites: Brownfield Grants: Click on a site for more

CIMC Sites Basic Filters CIMC Sites Advanced Filters CIMC Brownfield Grants Filters

Programs	Brownfields Properties	RCRA Corrective Action	Superfund
		or where	or where
Basic Categories	<input type="checkbox"/> Assessment Grants <input type="checkbox"/> Assessment Pilots <input type="checkbox"/> Cleanup Grants <input type="checkbox"/> RLF Grants <input type="checkbox"/> RLF Pilots <input type="checkbox"/> State and Tribal <input type="checkbox"/> 128(a) Grants <input type="checkbox"/> Targeted Brownfields Assessments	<input type="checkbox"/> Current Corrective Action <input type="checkbox"/> Remedy Selected <input type="checkbox"/> Construction Complete <input type="checkbox"/> Remedy Action Complete <input type="checkbox"/> Remedy Not Yet Selected	<input type="checkbox"/> Archived (no further remedial action planned. can only list archived sites - not map them) <input type="checkbox"/> Proposed <input type="checkbox"/> Final <input type="checkbox"/> Deleted
Institutional Controls	Controls are: <input type="checkbox"/> Required, or <input type="checkbox"/> Not Required, or <input type="checkbox"/> No Control	Control deployment is: <input type="checkbox"/> Controls are in place, or <input type="checkbox"/> No controls in place, or no control information recorded	Not Available



0 583mi



View this map in MyEnvironment



LEARN THE ISSUES | SCIENCE & TECHNOLOGY | LAWS & REGULATIONS | ABOUT EPA

ALL EPA THIS AREA Advanced Search
 SEARCH

Cleanups In My Community

Contact Us

You are here: EPA Home » Cleanups » Cleanups In My Community (CIMC)

Cleanups In My Community List Results

This is a list of only the sites, properties and facilities which reside within the boundaries of the geographic area you have specified and which meet the criteria you have specified. [About this Listing](#)

*To get information about the type of data in each column, click on the following links: [Cleanup Name](#), [Location Address](#), [City](#), [State](#), [ZIP Code](#), [County](#)

*To view all the profiles and reports available for a cleanup, click on the underlined link found in the "Cleanup Name" column.

*To directly view any profiles and reports available for a cleanup, click on the underlined link(s) found in the "Reports Available" column.

*To see a map on a cleanup, click on the underlined "MapIt" link found in the "Map Site" column.

*To sort the table based on each column, click on the header.

*Your search:

State:PA

- Brownfields** Assessment Grants:
- Federal Facilities** BRAC: RCRA: Superfund:
- RCRA Corrective Action** Current Corrective Action: Remedy Selected: Construction Complete: Remedy Action Complete: Remedy Not Yet Selected:
- Superfund** Proposed: Deleted:
- Recovery** Brownfields: Superfund:
- RLF Grants: RLF Pilots:
- State and Tribal:
- Targeted Brownfields:

Results List

Cleanup Name	Location Address	City Name	State Code	Postal Code	County Name	Reports Available	Map Site
FRANKLIN SLAG PILE (MDC)	3110 CASTOR AVENUE	PHILADELPHIA	PA	19134	PHILADELPHIA	Superfund	Map It
SUNOCO INC (R&M) PHILADELPHIA REFINERY	3144 PASSYUNK AVENUE	PHILADELPHIA	PA	19145	PHILADELPHIA	RCRA ECHO	Map It
ROHM & HAAS CHEMICAL RICHMOND ST PLT	5000 RICHMOND STREET	PHILADELPHIA	PA	19137	PHILADELPHIA	RCRA ECHO	Map It
PHILADELPHIA COKE CO INC	4501 RICHMOND STREET	PHILADELPHIA	PA	19137	PHILADELPHIA	RCRA ECHO	Map It
2201 E. TIOGA STREET	1 CITY HALL	PHILADELPHIA	PA	19107	PHILADELPHIA	Brownfields	Map It
1501-13 N. 2ND STREET	1 CITY HALL	PHILADELPHIA	PA	19107	PHILADELPHIA	Brownfields	Map It
1630-50 N. 5TH STREET	1 CITY HALL	PHILADELPHIA	PA	19107	PHILADELPHIA	Brownfields	Map It
220-250 W. LIBBINCOTT	1 CITY HALL	PHILADELPHIA	PA	19107	PHILADELPHIA	Brownfields	Map It



LEARN THE ISSUES | SCIENCE & TECHNOLOGY | LAWS & REGULATIONS | ABOUT EPA

ALL EPA THIS AREA Advanced Search

SEARCH

Cleanups In My Community

Contact Us Share

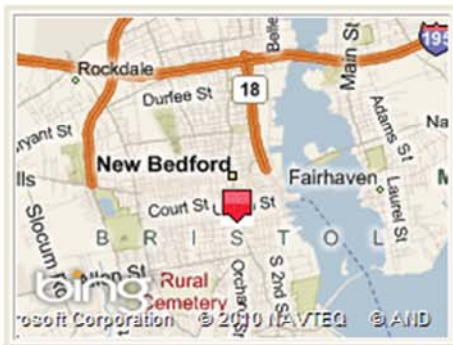
You are here: EPA Home » Cleanups » Cleanups In My Community

Cleanups In My Community Profile List Results

STANDARD TIMES FIELD

This profile provides a summary of the accomplishments reported to the US EPA by a Brownfields grant recipient or Targeted Brownfields Assessment Contractor at this Brownfields property.

Property Location



EPA Region 01 implements the Brownfields program for the state in which this property is located.

STANDARD TIMES FIELD

256 Kempton St
NEW BEDFORD, MA 2740

Assessment & Cleanup Activities and Progress Summary



This property has been assessed.

[View Summary of the Property Progress>>](#)

[View Assessment Activities >>](#)

[View Cleanup Activities>](#)

[View Institutional Controls>>](#)

[View Redevelopment Underway>>](#)

Assessment & Cleanup Results and Impact Summary

Each property is assessed to determine if any contaminants are found.

If the property is under an assessment grant from EPA, information on this assessment is reported to EPA.

The assessment has found contamination at this property

[View Media Affected and Contaminants Found>>](#)

If the property is contaminated and is being cleaned up under a cleanup grant from EPA, information on the cleanup may be reported to EPA.

[View Media Addressed and Contaminants Removed>>](#)

[View Leveraged Accomplishments>>](#)

Planned Improvements – Types of Cleanups to be added

- Superfund non-NPL (equivalents)
- Emergency Removals (from epaosc.net)
- State cleanups
- Federal-lead tribal UST (UST-Access)
- Urban Rivers
- Impaired Waters
- Wadeable Streams (impact of cleanups on streams)?
- Others?



OSWER

Planned Improvements – Additional functionality

- Map other RCRA sites (Corrective Actions are cleanups and are already included. Other RCRA facilities are not “cleanups” and would be added for perspective.)
- Map TRI sites?
- Map Environmental justice related census measures?
- Filtering capabilities for lists of cleanups
- Others?



OSWER

Your suggestions, questions, etc.



OSWER

Contact Information

Lisa Jenkins

Architect, Web Infrastructure Liaison, System Manager, GIS Contact, Internal Consultant
U.S. EPA/OSWER/OPM/IMDQS

E-mail: jenkins.lisa@epa.gov



OSWER