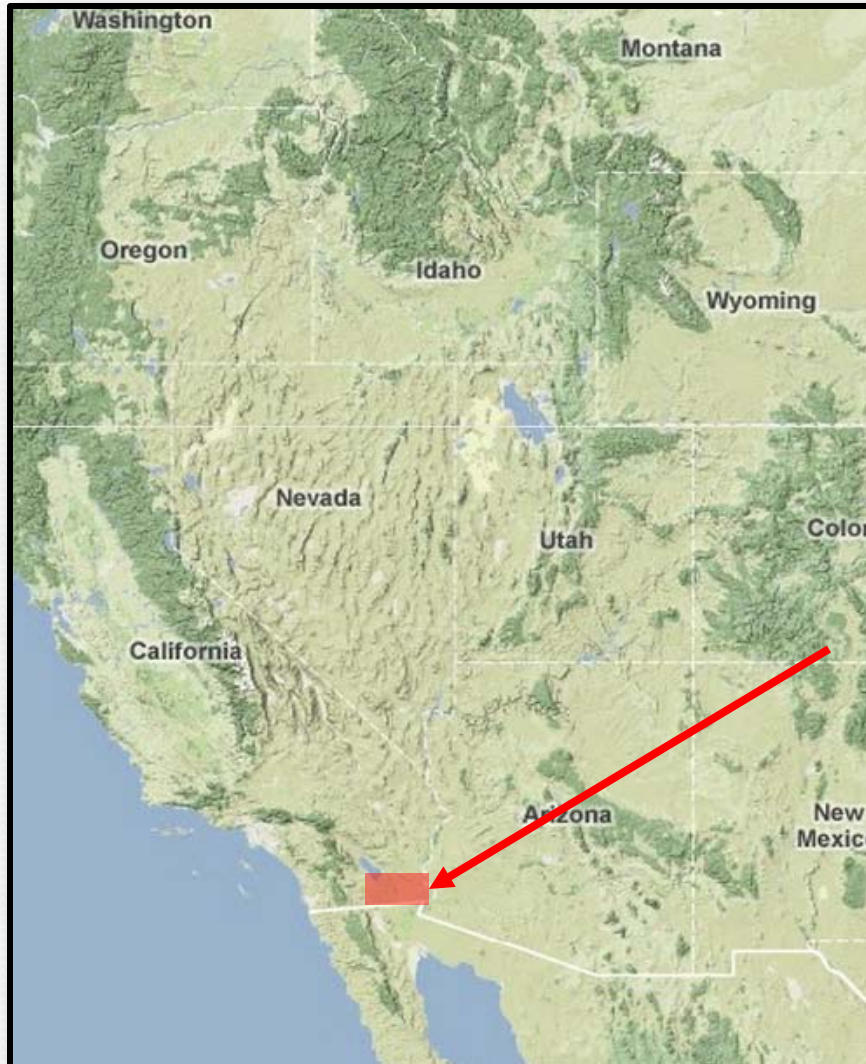


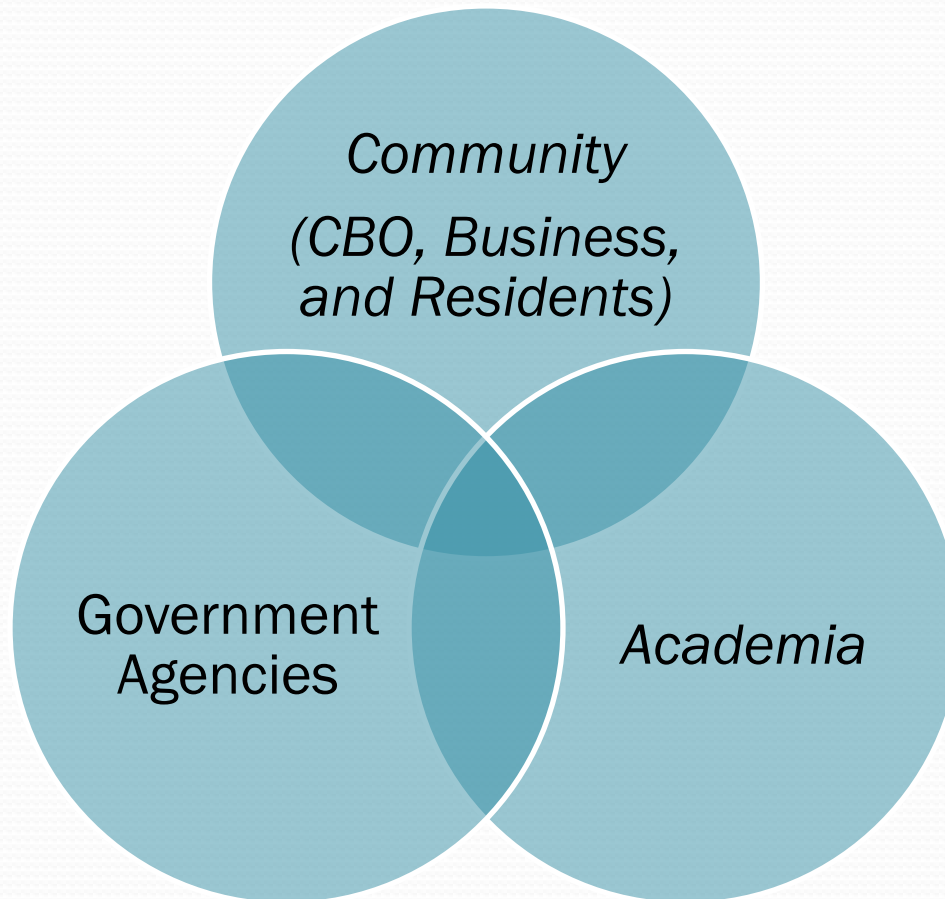
# The Imperial County Environmental Justice Task Force and Community Based Online Tracking Systems

Luis Olmedo  
Comite Civico del Valle  
Abraham Marquez  
National Latino Research Center  
November 2, 2010  
Washington DC



- Imperial County is located west of the Arizona state line and east of San Diego County along the US/Mexico border.
- Imperial County is primarily an agricultural community with 536,209 acres harvested *in 2009 (IC Agriculture Commissioners' Office, 2010)*
- Imperial County has the highest percentages of chronic health conditions in California ( *"Chronic Health Conditions of Californians"* 2010). Primarily due to poor air quality. Particulate matter levels are typically four times higher than in San Diego County (*Calif. Enviro. Health Investigations Branch, 2010*)

# Overview of the EJ Task Force



# Why Community Based?

- Government-Based Complaint Systems Lack Transparency
- Regulatory Databases Difficult to Understand
- Increases Community Participation
- Owned and operated by community

# Community Based Monitoring IVAN: Online Reporting [www.ivanonline.org](http://www.ivanonline.org)

Imperial  
Visions  
Action  
Network

IMPERIAL VISIONS ACTION NETWORK (IVAN) (Beta)

HOME REPORTS SUBMIT AN INCIDENT GET ALERTS CONTACT US ABOUT US TASK FORCE DONATE

FILTERS → REPORTS NEWS PICTURES VIDEO ALL

↓ CATEGORY FILTER

- ALL CATEGORIES
- AGRICULTURAL BURN
- NATURAL DISASTER
- WILDLIFE
- DUMPING
- TOXIC TOUR 2010
- CONFINED ANIMAL FACILITIES
- VANDALISM

↓ OTHER LAYERS

- IMPERIAL COUNTY SCHOOLS
- TRI FACILITIES

Scale = 1 : 2M -113.77991, 32.64883 EPSG:900913

From: Jun 2010 To: Aug 2010 PLAY

Jan 2010 Apr 2010 Jul 2010 Dec 2010

6  
4



# How To Submit A Report

[www.ivanonline.org/reports](http://www.ivanonline.org/reports)

# IVAN Enhances Community Tracking Efforts

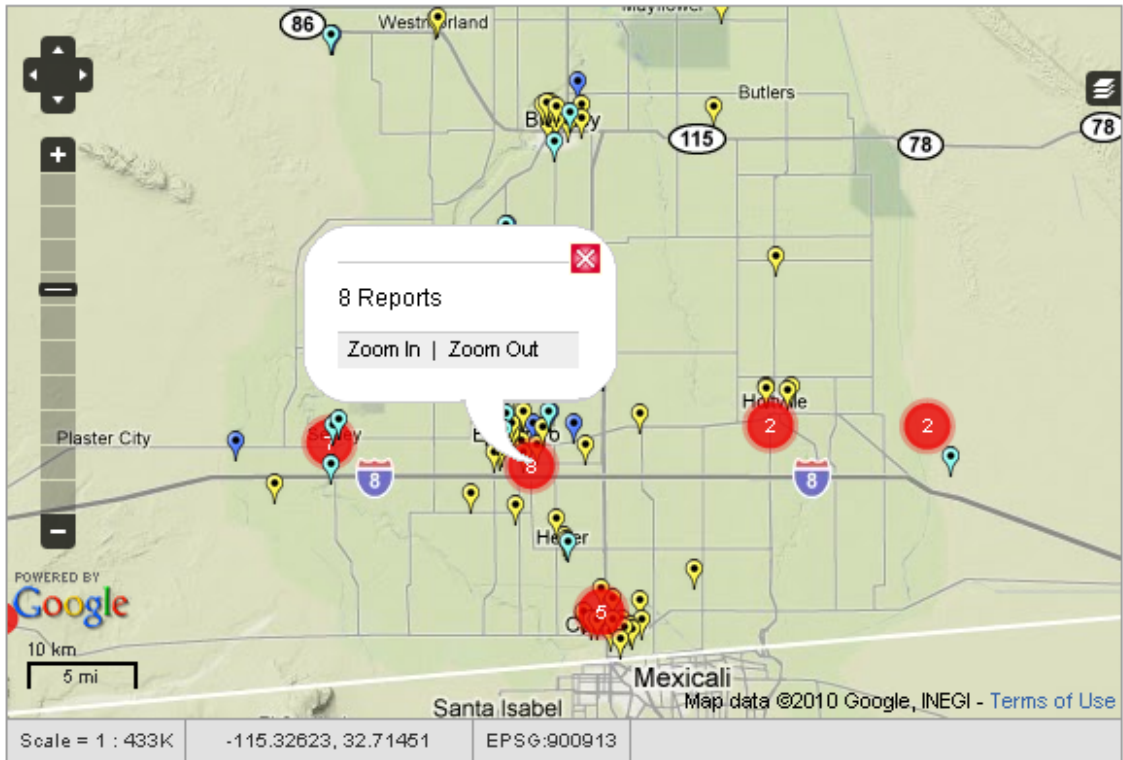
## *Low Cost Technology:*

- Photographic Logs
- Site Mapping

## *Enables Spatial Analysis*

## *Integration of existing regulatory data sets:*

- TRI database
- Cal ARB



**ALL CATEGORIES**

■ AGRICULTURAL BURN

■ NATURAL DISASTER

■ WILDLIFE

■ DUMPING

■ TOXIC TOUR 2010

■ CONFINED ANIMAL FACILITIES

■ VANDALISM

■ OFF-ROAD VEHICLES

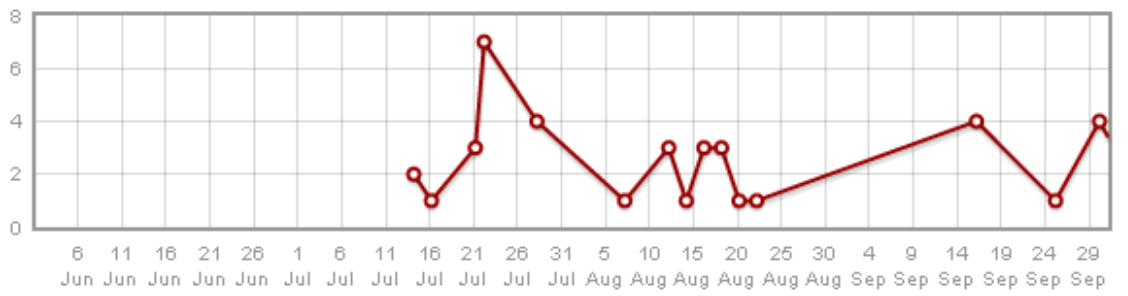
■ CONSUMER PRODUCTS

■ GEOTHERMAL PLANTS

**IMPERIAL COUNTY SCHOOLS**

■ TRI FACILITIES

■ ELVIEW AIR EMISSIONS





## **IVAN Enhances Community Tracking Efforts**

- Data Submitted via text message, voicemail, email, or web in Near Real-Time
- Map of Reports is Automatically Generated
- Track Multiple Categories Simultaneously
- Upload Photos/Video with Reports
- Update Case Status

# IVAN Enhances Enforcement Efforts

Sampling and investigation:

- lead to enforcements
- lead to referrals
- lead to resolutions

## IVAN Enforcement Outcomes

- 34 Reports Referred to local agency (DTSC)
- 11 Reports Referred to Other Agencies
- \$90,000 in Penalties Paid to DTSC
- \$15,000 Granted “Environmental Projects”
- \$5,000 Allocated to Training Requirements
- Additional \$10,000 in Penalties Allocated to PL 280 Training



## Environmental Projects

- Imperial Visions Action Network (IVAN)
- Fire Departments
- Environmental Trainings

# Imperial County EJ Task Force

- Imperial Visions Foundation
- Comite Civico del Valle, Inc.
- CalEPA's Dept. of Toxic Substances Control
- National Latino Research Center @ CSUSM
- Loma Linda University
- Imperial Valley College
- Seeley Citizens United
- Calexico New River Committee
- Quechan Tribal Members
- Clean Air Initiative
- Residentes de Rio Nuevo
- IC Agricultural Commission
- IC Farm Bureau
- The Desert Protective Council, Inc.
- California Highway Patrol
- IC Department of Environmental Health
- So. Cal. Assoc. of Governments
- Imperial Valley Residents Pro Environmental Justice
- Speckles Sugar Inc.

# [www.ivanonline.org](http://www.ivanonline.org)

National Latino Research Center  
Cal State San Marcos  
San Marcos, CA 92078  
[www.csusm.edu/nlrc](http://www.csusm.edu/nlrc)

Abraham Marquez  
Environmental Project Specialist  
(760) 750-3507  
[amarquez@csusm.edu](mailto:amarquez@csusm.edu)

Comite Civico Del Valle, Inc.  
699 "E" Street  
Brawley, CA 92227

Luis Olmedo  
Executive Director  
Phone (760) 351-8761  
[comitecivico@sbcglobal.net](mailto:comitecivico@sbcglobal.net)